

S. M. EXPORTS

WORK GLOVES SPECIALIST

Your **Safety** is
in your **Hands**



PRODUCT CATALOGUE



ABOUT US

S.M. Exports is a two star export house manufacturing industrial safety gloves and apparel primarily for the European and North American markets. Superior quality is a core value that stands at the helm of whatever we do and what has indeed been the prime reason behind our steady growth across nearly three decades. Situated in the beautiful coastal city of Kolkata (the capital city of West Bengal) in India where we could rightly identify and harness the necessary resources, S.M. Exports is a name to reckon within the field of working gloves.

Kolkata (India) has indeed been the ‘City of Joy’ for us!

So, what made us thrive in Kolkata? The city is well connected both on domestic and international fronts and we can easily source raw materials and manpower here. Taking these factors to our advantage and employing a quality-centric attitude, with perpetual focus on improvement, we have managed and sustain a remarkable growth in the 35 years that we have been operational.

Our Methodology

S.M. Exports produces and exports working gloves that live up to industry standards and we have the right know-how to customize the product as per client-specific requirements. We are an ISO 9001:2015 certified company and we process the leather in own tanning unit. We also take pride in our efficient and dedicated quality control system, an experienced team of professionals who are quick to address client needs, reliable product source, and an ability to come up with novel ideas of work-friendly designs. Driven by an unrelenting focus on quality improvement, we believe in setting precedents for others when it comes to industry-grade produce, competitive pricing, timely shipments and dedicated customer service.

Your and S.M. Exports Relationship

Choose us as your supplier of working gloves and start a business relationship that will help you attain and exceed your expectations of steady business development. We can say with utmost confidence that when you give us an opportunity to serve you, you are paving the way for an enriching mutual relationship that only grows with time and effort. YOU set high standards of hand protection and we will achieve them for YOU!

Split Work Glove

- › Shoulder split leather with strong rubberized cuff.
- › High abrasion
- › Half lined with fleece for enhanced comfort

S1601 S-2XL

Leather knuckle strip



Durable cowsplit leather

7 cms rubberized safety cuff



Double Palm Split Work Glove

- › Shoulder split leather
- › Reinforced palm
- › Rubberized 7cms cuff

S1603 S-2XL



Full Leather Back Work Glove

- › Side split leather
- › Full leather hand coverage
- › Rubberized 7cms cuff

S1604 S-2XL

Yellow Split Work Glove

- › Soft and comfortable select shoulder split
- › Half lined fleece palm
- › Rubberized 7cms cuff

S1607 S-2XL



Heavy Split Work Glove

- › 1.4-1.6mm Side split leather
- › Kevlar® Sewn
- › Rubberized 7cms strong canvas

S1610 S-2XL 7cms cuff

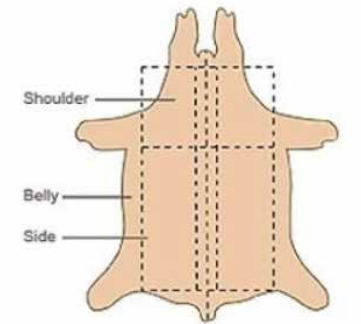
S1610 S-2XL 11cms cuff



Heavy Patch Palm Split Work Glove

- › 1.4-1.6mm thick split
- › Patch Palm
- › Heavy fabric back with 7cms rubberized cuff

S1620 L



Cowsplit is one of the most durable kind of leather available. The location from where the split leather is cut is very important. Side split being the most durable and expensive followed by shoulder split and then belly split.



Goatskin Work Glove

- › Soft and supple goatskin
- › Gunn cut pattern
- › Rubberized 7cms cuff

G501 L



Hi-Viz Cowsplit Work Glove

- › 1.0-1.1mm thick cowsplit leather
- › Hi-Viz reflective tape at back
- › Rubberized 7cms cuff

C515 S-2XL

Premium Grain Cowhide Work Glove

- › 1.2-1.3mm thick premium cowgrain
- › Cotton Stripped handback
- › Rubberized 11cms cuff

C512 S-2XL



Standard Grain Cowhide Drivers Glove

- › Durable cowhide leather
- › Shirred elastic back
- › Keystone thumb pattern with outside seam

C201 2XS-3XL



Durable cowhide leather

Ergonomic keystone thumb

Shirred elasticated handback



Premium Grain Yellow Cowhide Drivers

- › Reinforced palm
- › Rolled leather cuff
- › Shirred elastic back

C214 2XS-3XL



Economy Cowhide Drivers Glove

- › Durable cowgrain leather
- › Inside seam wrapped index finger
- › Wing thumb

C216 2XS-3XL



Top Grain Cowhide Palm Drivers with Yellow Cowsplit back

- › Durable cowhide leather
- › Shirred elastic back
- › Keystone thumb pattern with outside seam

C215 2XS-3XL



Standard Cowhide Drivers Glove

- › HiViz tips on fingers and thumb
- › Shirred elastic back
- › Keystone thumb

C207 2XS-3XL



Standard Grain Cowhide Drivers Glove

- › Durable cowhide leather
- › Leather Pull Strap
- › Straight thumb pattern with outside seam

C203 2XS-3XL

Premium Goatskin Drivers Glove

- › Soft premium goatskin leather
- › Keystone thumb
- › Inside seam

G301 S-2XL



Premium Cowsplit Drivers Glove

- › Durable Cowsplit leather
- › Shirred elastic back
- › Keystone thumb

S402 2XS-3XL



Standard Goatskin Drivers Glove

- › Soft premium goatskin leather
- › Straight thumb
- › Inside seam

G303 S-2XL

Premium Grain Cowhide Drivers

- › Keystone thumb
- › Rolled leather cuff
- › Ball & Tape closure

C208 2XS-3XL



Premium Mig Welder

- › Top grain durable cowhide leather palm
- › Cowsplit reinforced palm and thumb
- › Soft cotton fabric lining for enhanced comfort
- › Kevlar® sewn

W2111 S-2XL



Select Side Split Cowhide Stick Glove

- › Side Split Cowhide leather
- › Reinforced palm
- › Kevlar® sewn
- › Soft padded cotton liner for enhanced comfort

W2207 L-XL



Standard Mig Welding Glove

- › Durable cowhide leather
- › Cowsplit safety cuff
- › Kevlar® sewn

W2110 S-2XL



Premium Goatskin Tig Welding Glove

- › Soft and supple goatskin leather
- › Exclusive side padding
- › Padded cotton fleece back liner
- › Kevlar® sewn

W2122 S-2XL



Performance Side Split Cowhide Stick Glove

- › Side Split Cowhide leather
- › Cowsplit welting
- › Kevlar® sewn
- › Soft cotton fabric lining for enhanced comfort

W2206 L-XL

Premium Goatskin Mig Welder

- › Soft and supple goatskin leather palm
- › Cowsplit back and safety cuff
- › Soft cotton fabric lining for enhanced comfort
- › Kevlar® sewn

W2125 S-2XL



Premium Goatskin Tig Welding Glove

- › Soft and supple goatskin leather
- › Straight thumb design for better grip
- › Cowsplit safety cuff
- › Kevlar® sewn

W2121 S-2XL



Goatskin Tig Welding Glove

- › Standard goatskin leather palm
- › Blue cowsplit safety cuff
- › Kevlar® sewn

W2104 S-2XL



Standard Shoulder Split Cowhide Stick Glove

- › Shoulder Split Cowhide leather
- › Reinforced thumb
- › Kevlar® sewn
- › Soft cotton fabric lining for enhanced comfort

W2208 L-XL



Standard Shoulder Split Cowhide Stick Glove

- › Durable Split Cowhide leather
- › Reinforced palm
- › Kevlar® sewn
- › Soft cotton fabric lining for enhanced comfort

W2209 L-XL

Value Split Cowhide Stick Glove

- › Economy split cowhide leather
- › Soft cotton lining
- › Welting on stress areas

W2201 L-XL



Premium Arc Flash Cut Resistant Drivers Glove

- › Durable cowhide leather
- › Lined with ANSI A6 Aramid fabric
- › Kevlar® sewn

C701 S-2XL



Heavy duty cowgrain leather



Ergonomic keystone thumb

Elasticated hand back

ANSI A6 Aramid lining



Durable Kevlar® stitching



Premium Goatskin Cut Resistant Drivers Glove

- › Soft and supple goatskin leather
- › Lined with ANSI A5 HPPE fabric
- › Ergonomic keystone thumb

G701 S-2XL



GRAMS 2200-2999



Impact and Cut Resistant Goatskin Drivers Glove

- › Soft and supple goatskin leather
- › Impact resistant TPR
- › Lined with ANSI A5 HPPE fabric

G703 S-2XL



GRAMS 2200-2999

Premium Cut Resistant Tig Glove

- › Soft and supple goatskin leather
- › Lined with ANSI A5 Aramid fabric
- › Kevlar sewn

G710 S-2XL



ANSI A5 Aramid lining



Impact 2 Drivers Glove

- › Soft and Supple goatskin leather
- › ANSI Impact level 2
- › Lined with ANSI Aramid A5 liner

G702 S-2XL



GRAMS 2200-2999



NEW PRODUCT

Touch Screen tips

Ultimate Performance Glove

- › Soft and Supple Goatskin leather palm
- › Anti Vibration gel reinforcement
- › Lined with A5 Aramid fabric
- › Impact resistant TPR at back and thumb
- › Neoprene cuff with Velcro closing

M2101 S-2XL

Impact 2 TPR

Adjustable cuff

Anti-vibration palm

Impact and Cut Resistant Goatskin Glove

- › Soft and Supple Goatskin leather palm
- › Lined with A5 HPPE fabric
- › Impact resistant TPR at back and thumb
- › Neoprene cuff with Velcro closing

M2102 S-2XL



GRAMS 2200-2999



	Mean (kN)	All Impact (kN)
ANSI / ISEA 138 1	≤9	≤11.3
ANSI / ISEA 138 2	≤6.5	≤8.1
ANSI / ISEA 138 3	≤4	≤5

Distance from Fingertip

Impact 25mm from Fingertip
Impact 50mm from Fingertip
X Knuckle Impacts

ANSI CUT LEVEL A1 GRAMS 200-499	ANSI CUT LEVEL A2 GRAMS 500-999	ANSI CUT LEVEL A3 GRAMS 1000-1499
ANSI CUT LEVEL A4 GRAMS 1500-2199	ANSI CUT LEVEL A5 GRAMS 2200-2999	ANSI CUT LEVEL A6 GRAMS 3000-3999
ANSI CUT LEVEL A7 GRAMS 4000-4999	ANSI CUT LEVEL A8 GRAMS 5000-5999	ANSI CUT LEVEL A9 GRAMS 6000+

CUT AND IMPACT PROTECTION GLOVES

Premium Yellow Goatskin Mechanical Gloves

- › Soft and supple goatskin leather
- › Reinforced palm
- › Elasticated wrist with Velcro closing

M1108 S-2XL



Premium Yellow Goatskin Mechanical Gloves

- › Soft and supple goatskin leather
- › Cowsplit reinforcement on palm and thumb
- › Elasticated wrist with Velcro closing

M1106 S-2XL



Premium Goatskin Mechanical Gloves

- › Soft and supple goatskin leather
- › Goatskin reinforcement on palm & thumb
- › Elasticated wrist with Velcro closing

M1109 S-2XL



Premium Goatskin Mechanical Gloves

- › Soft and supple goatskin leather
- › Fourchette fingers
- › Elasticated wrist with Velcro closing

M1102 L/XL



Premium Goatskin Mechanical Gloves

- › Soft and supple goatskin leather
- › Ergonomic round thumb
- › Elasticated wrist with Velcro closing

M1101 S-2XL



Premium Cowhide Winter Drivers Gloves

- › Durable cowhide leather
- › Soft polyester red fleece for enhanced comfort
- › Ergonomic keystone thumb

F3114 S-2XL



Premium Goatskin Winter Drivers Gloves

- › Soft and supple goatskin leather
- › Lined with C-100 Thinsulate®
- › Ergonomic keystone thumb

F3115 S-2XL

Premium Cut Protective Winter Glove

- › Soft premium goatskin leather
- › C100 thinsulate laminated with HPPE A5 fabric
- › Kevlar® sewn

G703 2XS-3XL



Premium Thinsulate Lined Work Gloves

- › Rugged cowsplit leather
- › Lined with C-100 Thinsulate®
- › 100% cotton back and rubberized cuff

F3105 S-2XL



Premium Cowsplit Winter Drivers Gloves

- › Rugged cowsplit leather
- › Fur lined for extra warmth
- › Ergonomic keystone thumb

F3120 S-2XL



Premium Assembly Glove

- › Comfortable PU coated fabric
- › Breathable
- › Enhanced fit for work demanding accuracy and precision

MS1201 S-2XL



Heavy Duty Impact Glove

- › Water and Oil repellent palm
- › Lined with HPPE A5 fabric for cut protection
- › Impact protection for knuckles and thumb

MS1301 S-2XL



Impact resistant TPR in fingers, knuckle and thumb



Reflective Suede Glove

- › Microfiber suede at palm
- › Touch screen finger tips
- › Reflective strip for enhanced visibility
- › Neoprene wrist closer

MS1106 S-2XL



Hi-Viz Suede Work Glove

- › Padded Microfiber Suede at palm
- › Hi-Viz fourchettes
- › Touch screen finger tips
- › Neoprene wrist closer

MS1108 S-2XL



Classic Slip On Glove

- › Artificial leather palm
- › Padded spandex back
- › Elasticated wrist for improved fit

MS1101 S-2XL



Padded Work Glove

- › Padded microfiber suede at palm
- › Knitted fourchette fingers for improved fit
- › Ergonomic keystone thumb

MS1103 S-2XL

Suede Assembly Glove

- › Microfiber suede at palm
- › Touch screen finger tips
- › Neoprene wrist closer

MS1107 S-2XL



High Grip Work Glove

- › Silicon grip at palm
- › Spandex back
- › Touch screen finger tips
- › Neoprene wrist closer

MS1109 S-2XL



Synthetic Work Glove

- › Microfiber suede at palm
- › Knitted fabric back
- › Elasticated wrist for improved fit

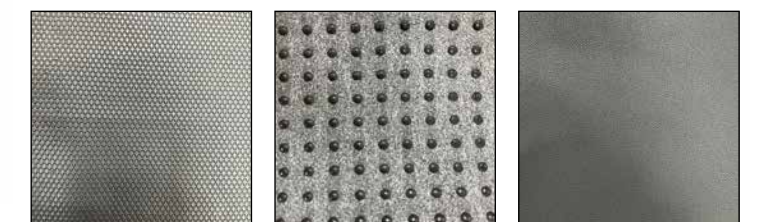
MS1102 S-2XL



What is PU coated leather?

Polyurethane-based faux leather is made by coating natural fabrics like cotton or wool with a polymer-based substance, then treating it to look like real leather. This type of faux leather is more breathable.

Some of the designs are -



Extreme Freezer Glove

- › Premium Goatskin leather
- › Waterproof and wind proof reflective back
- › Lined with poly wadding
- › Knitted wrist for superior insulation

F5101 S-2XL

Soft goatskin leather

Knitted wrist



HiViz tape for enhanced visibility

Waterproof and windproof handback

Heavy wadding for insulation upto negative 22°F



Water Repellant Cowhide Freezer Glove

- › Soft supple water resistant cowgrain leather
- › Kevlar® sewn
- › Lined with poly wadding.
- › Knitted wrist for superior insulation

F5102 S-2XL



Premium Cowhide Freezer Gloves

- › Soft and thick cowhide leather
- › Lined with C-100 Thinsulate®
- › Knitted wrist for superior insulation

F3122 S-2XL



Water Repellant Cowhide Freezer Mitten

- › Soft and thick water-resistant cowhide leather
- › Durable cowsplit back
- › Lined with thick poly wadding

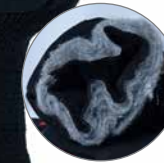
F5103 S-2XL



Fleece Freezer Glove

- › Silicon printed palm for enhanced grip
- › Lined with poly wadding.
- › Knitted wrist for superior insulation.

F5202 L-XL



Canvas Cold Resistant Freezer Glove

- › Coated palm for enhanced grip
- › Adjustable Velcro closing wrist for superior comfort
- › Lined with thick poly wadding

F5201 M-XL



Canvas Mittens

- › Coated palm for enhanced grip
- › Clinching at wrist area
- › Lined with thick poly wadding.

F5203 S-2XL





Superior Thermal Clothing

- › 65% polyester and 35% viscose
- › High performing baselayer for enhanced warmth and protection
- › Pre-shrunk and washed to avoid shrinkage
- › Elasticated waist band for improved fit

PV100LS	S-2XL	Long Sleeve Top
PVLJ100	S-2XL	Trousers
PV100SS	S-2XL	Short Sleeve

Superior comfortable fabric for long working hours

Elasticated waistband for improved fit

Preshrunk knitted fabric to avoid shrinkage



Classic Thermal Clothing

- › 100% polyester fabric
- › Preshrunk and washed to avoid shrinkage
- › Elasticated waist band for improved fit
- › Available in short sleeve

P100LS	S-2XL	Long Sleeve Top
PJ100	S-2XL	Trousers

Cow Split Apron

- › 24"X36" Bib Apron
- › Thick Cow Split leather
- › Adjustable cotton straps
- › Also available in 30", 42" and 48"
- › Kevlar® sewn

LA1036

Shoulder and waist harness straps

Double pockets for convenience

Durable Kevlar® stitching



Split Leg Cowhide Apron

- › 24"X48" Leg Split Apron
- › Thick Cow Split leather
- › Adjustable cotton straps
- › Kevlar® sewn

LA3048



22" Hybrid Sleeves

- › 9 oz FR treated 100% cotton fabric
- › Soft and supple goatskin leather
- › Elasticated ends for enhanced fit
- › Kevlar® sewn

LS301

25" Split Cowhide Sleeves

- › Thick Cow Split leather
- › Adjustable leather straps
- › 25" long
- › Kevlar® sewn

LS401



18" Split Cowhide Sleeves

- › Thick Cow Split leather
- › Adjustable leather straps
- › 18" long
- › Kevlar® sewn

LS402



Split Cowhide Legging

- › Thick Cow Split leather
- › Metal reinforced toe caps for safety
- › Leather adjustable straps
- › Kevlar® sewn

AL401



Cape Sleeves with Bib

- > Cape with 24" bib
- > Thick Cow Split leather
- > Bib includes waist strap
- > Kevlar® sewn

LC1501 S-5XL



Split Cowhide Welding Jacket

- > Thick Cow Split leather
- > 30" length
- > Outer pockets for small items
- > Kevlar® sewn

LJ1401 S-5XL



FR Cotton Jacket

- > 9 oz FR treated 100% cotton fabric
- > 30" length
- > Outer pockets for small items
- > Kevlar® sewn

FJ101 S-5XL



Hybrid 30" Jacket

- > 9 oz FR treated 100% cotton fabric
- > Thick Cow Split leather sleeves
- > 30" length
- > Kevlar® sewn

LS401 S-2XL



Grain Cowhide Welding Jacket

- > Thick Cow grain leather
- > 30" length
- > Outer pockets for small items
- > Kevlar® sewn

LJ1405 S-5XL

Premium Split Cowhide Welding Jacket

- > Thick Cow Split leather
- > 30" length
- > Satin lined shoulders
- > Kevlar® sewn

LJ1402 S-5XL



Animal Handling Gloves

- › Thick cowhide leather
- › Lined with heavy cotton fabric for improved comfort
- › Reinforced back, thumb and finger tips
- › Metal studs for enhanced protection
- › Suitable for handling of mink, snakes, rodents & other small animals

Welted seams for thread protection



Durable Kevlar stitching

Wide Thumb Strip reinforcement



Heat Resistant Gloves

- › Superior Brontoguard® Cowsplit Leather
- › Heat Resistant up to 250°C
- › Lined with heavy cotton fabric for improved comfort
- › Kevlar® sewn

H4102 M-XL



Barbeque Gloves

- › Heavy cowsplit leather
- › Lined with heavy cotton fabric for improved comfort
- › Kevlar® sewn

Terry Mittens

- › Terry cotton palm and cotton canvas cuff
- › Heavy wadding for improved insulation
- › Lined with heavy cotton fabric for improved comfort



Canvas Mittens

- › Heavy Cotton Canvas Fabric
- › Leather reinforced thumb for longevity
- › Heavy wadding for improved insulation
- › Lined with heavy cotton fabric for improved comfort



Tool Bag

- › Heavy cowgrain leather
- › 10 pockets including nail pocket
- › Tape and hammer holder for convenience
- › Available with and without belt





S. M. EXPORTS

WORK GLOVES SPECIALIST

Corporate Address:

259/2 Rajarhat Main Road,
Athghora Checkpost, Kolkata - 700136, India

Telephone: +91 33 4065 2027, +91 33 2519 6827

Email: info@smexports.com **Website:** www.smexports.com

